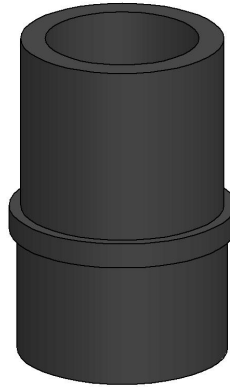


## Project Configuration Sheet – SPV3202-02

**Wincor Nixdorf  
Customer Display Adapter for BA63/66  
Version 1.4**



### Parts List

<i>Part No.</i>	<i>Description</i>	<i>Qty</i>	<i>Assemble</i>	<i>Box</i>
SP2-P22103-02	Customer Display Adapter SP2, for WNI BA63/66	1		1

**Installation Guide** MK15-0176

**Packaging** Item Box = B008 (packed 18) Item Weight = 1.8kg Pallet Capacity = 90 items

**Box Label** MK15-0029 – SPV3202-02 – V 1.4 (place on each item)  
MK15-0026 – 18x SPV3202-02, WNI – Customer Display Adapter for WNI BA63/66 - V 1.4

**Colour** 02 Black