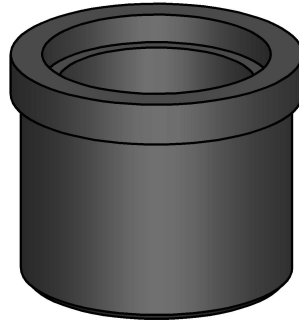


Project Configuration Sheet – SPV3203-02

Epson
Customer Display Adapter for DM-D110 & DM-D210
Version 1.4



Parts List

<i>Part No.</i>	<i>Description</i>	<i>Qty</i>	<i>Assemble</i>	<i>Box</i>
SP2-P22106-02	Customer Display Adapter SP2, for DM-D110 & DM-D210	1		1

Installation Guide

MK15-0176

Packaging Item Box = B008 (packed 18) Item Weight = 1kg Pallet Capacity = 90 items

Box Label MK15-0029 – SPV3203-02 – V 1.4 (place on each item)
MK15-0026 – 18x SPV3203-02, Epson – Customer Display Adapter for DM-D110 & DM-D210 - V 1.4

Colour 02 Black