

Net Port Configuration Tool User Manual

Version	Date	Description
V4.0.0	2024-1-12	New Version Released.

Content

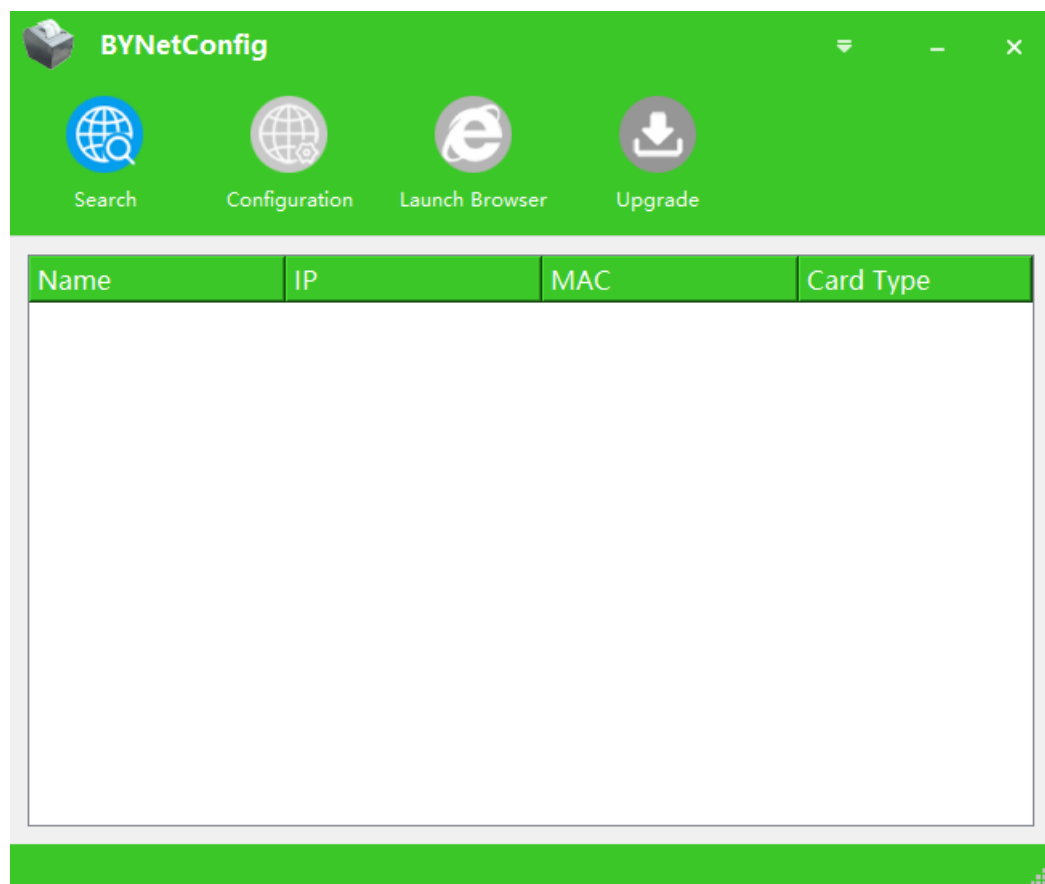
1	Brief.....	4
2	Run.....	4
3	Configuration	4
3.1	Search Printers function	4
3.2	IP Parameter Setting function	5
3.3	Launch Browser	6
3.4	Firmware Update	6
4	Others	7
4.1	Language change	7

1 Brief

The configuration tool software mainly searches and configures network interface devices within the local area network through the UDP broadcast protocol, supporting multiple network card searches.

2 Run

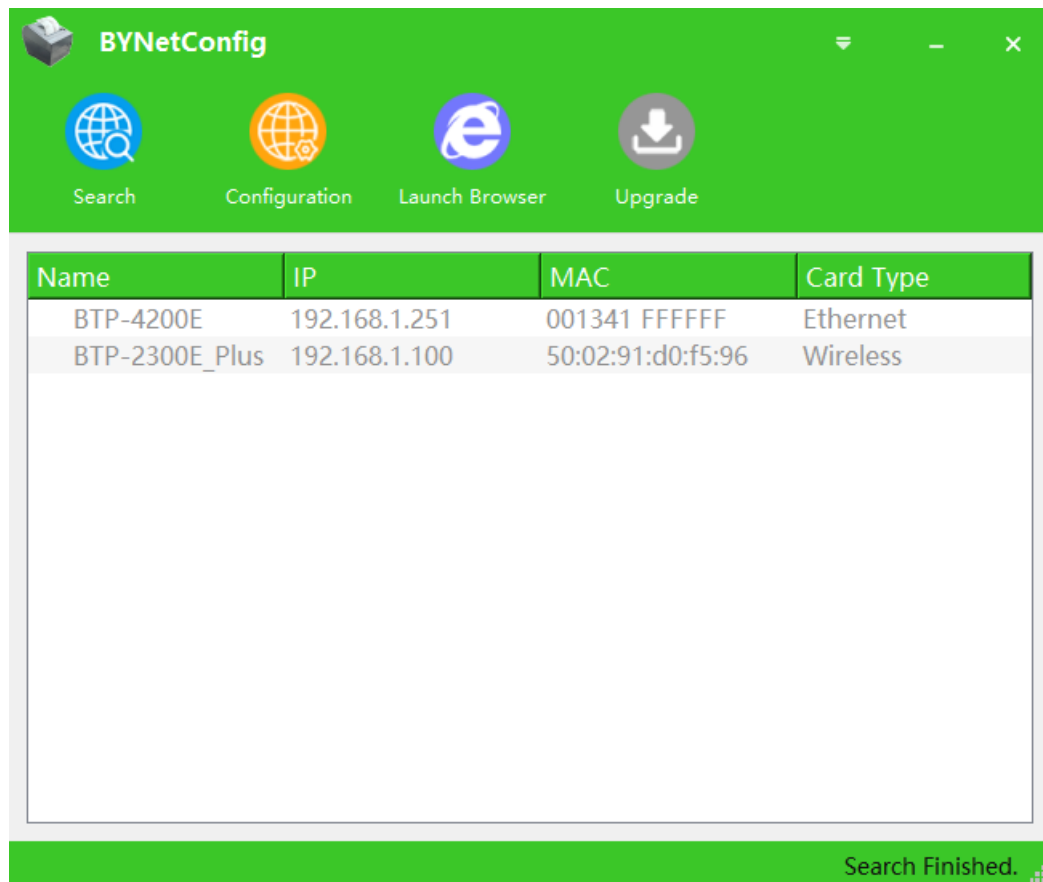
Run the BYNetConfig executable file, start the configuration tool software, and the configuration tool main interface will pop up:



3 Configuration

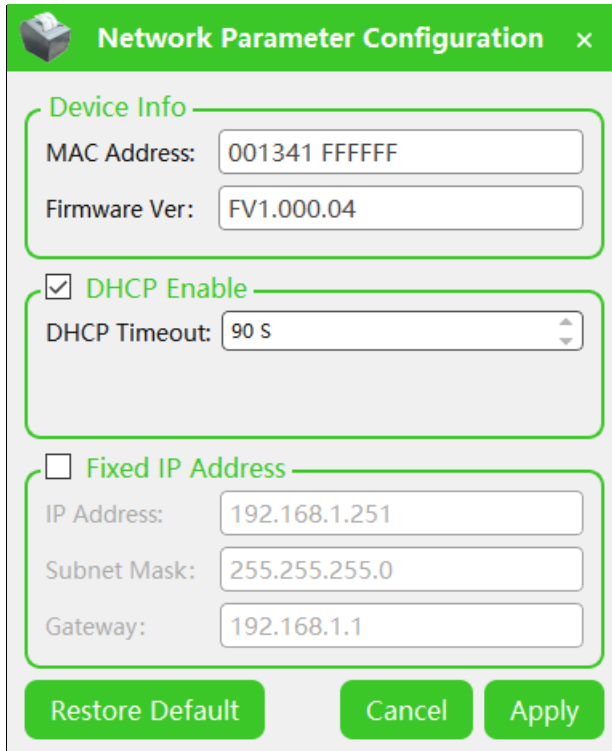
3.1 Search Printers function

Click the “Search” button on the navigation bar to search for network interface devices within the local area network. Display the searched devices in the device list.



3.2 IP Parameter Setting function

Select the network interface device found in the list box and click the "Configure" button in the navigation bar. Pop up the network parameter configuration dialog box.



The image shows a 'Network Parameter Configuration' dialog box with a green header bar containing a printer icon and a close button. The dialog is divided into three sections: 'Device Info', 'DHCP Enable', and 'Fixed IP Address'. The 'Device Info' section has input fields for 'MAC Address' (001341 FFFFFFF) and 'Firmware Ver' (FV1.000.04). The 'DHCP Enable' section has a checked checkbox and a 'DHCP Timeout' dropdown set to '90 S'. The 'Fixed IP Address' section has an unchecked checkbox and input fields for 'IP Address' (192.168.1.251), 'Subnet Mask' (255.255.255.0), and 'Gateway' (192.168.1.1). At the bottom are three buttons: 'Restore Default', 'Cancel', and 'Apply'.

Network Parameter Configuration ×

Device Info

MAC Address: 001341 FFFFFFF

Firmware Ver: FV1.000.04

☒ **DHCP Enable**

DHCP Timeout: 90 S

☐ **Fixed IP Address**

IP Address: 192.168.1.251

Subnet Mask: 255.255.255.0

Gateway: 192.168.1.1

Restore Default Cancel Apply

Through the network parameter configuration interface, it is possible to configure and modify parameters such as IP address, subnet mask, gateway address, etc. There are two configuration methods: one is to automatically obtain the IP address; the second is the manual setting method. Click the "Apply" button to make the configuration effective.

Through the network parameter configuration interface, it is possible to restore default settings. Click the "Restore Default" button to restore the interface board parameters to their factory settings.

Support JK-E05 interface board to configure network parameters.

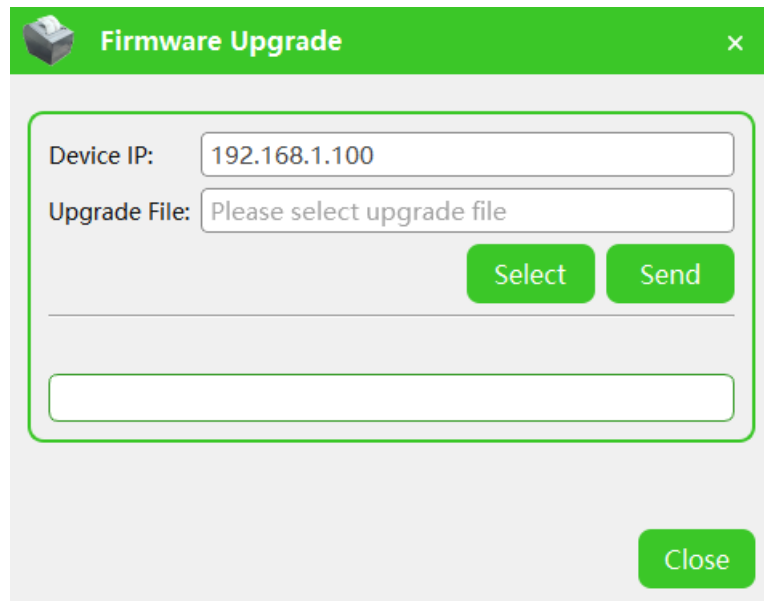
3.3 Launch Browser

Select the network interface device found in the list box, click the "Start Browser" button in the navigation bar, and go to the system browser to open the configuration webpage of the network interface device.

The configuration webpage of network interface devices depends on device communication and internal implementation.

3.4 Firmware Update

Select the network interface device found in the list box, click the "Upgrade" button on the navigation bar, and a network interface firmware upgrade window will pop up:



The image shows a 'Firmware Upgrade' dialog box with a green header bar containing a router icon and a close button (X). The main area is light gray and contains a rounded rectangle with a green border. Inside this rectangle, there are two input fields: 'Device IP:' with the value '192.168.1.100' and 'Upgrade File:' with the placeholder text 'Please select upgrade file'. Below these fields are two green buttons labeled 'Select' and 'Send'. At the bottom of the rounded rectangle is an empty text area. Outside the rounded rectangle, at the bottom right of the dialog, is a green button labeled 'Close'.

Click the "Select" button, select the firmware program file to be upgraded, and then click the "Send" button. The information box will display the upgrade progress, complete the firmware upgrade, and prompt the upgrade success message if successful. If unsuccessful, prompt the specific failure message.

Support firmware upgrade for JK-W04 interface board. During the upgrade process, no other operations are allowed on network devices.

4 Others

4.1 Language change

The software supports Simplified Chinese and English, and can switch display languages in the program menu bar.