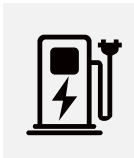


10" Panel Mount

DuraBrite Series Outdoor High Bright Monitors



Operating outdoor kiosks is not for the fainthearted. The average touch display just won't do because of the numerous 'moving parts' in an outdoor environment. You would need both brains and brawn for successful deployment. To take on these physical challenges, General Touch has come up with the DuraBrite series outdoor high bright monitors. Currently available in sizes from 7 to 32 inches, the state-of-the-art DuraBrite series have been carefully designed and produced with innovative enhancements and capabilities. These enhancements would facilitate optimal performance in adverse environmental conditions, making the series ideal for use in payment terminals, self-service kiosks, EV charging stations, ticketing machines, vending machines, outdoor signage and more.



EV Charging Station



Self-service Kiosk



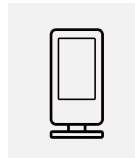
Vending Machine



Ticketing Machines



Parking Pay Station



Outdoor Signage

Features & Benefits

- High-Tni up to 105° allows a wide operating temperature range from -20°C to 60°C, eradicating any fear of display black-out.
- Brightness up to 1300 nits and anti-glare coating delivers better visuals and readability even in direct sunlight.
- 50K hours LED lifetime - 50,000 hours of MTBF for lasting 24/7 operation.
- UV&IR protection minimizes internal heat accumulation and decelerates components aging significantly.
- UV-resistant ink prevents the screen printing from peeling effectively.
- The touch performance is heightened to facilitate smooth operations even when there are water droplets on the touch glass.
- Advanced optical bonding takes interior fogging out of the equation.
- Automatic brightness adjustment corresponds with ambient light to ensure 24/7 stable performance and to extend LCD panel lifespan.
- The metal parts have been beefed up with rustproofing for all-year outdoor deployment.
- When the touchmonitor is properly fitted to the kiosk without any gaps, the waterproof and dustproof rating can reach IP65 & Nema 4x , further fortifying the whole touch unit.

SPECIFICATIONS

Name	10 Inch Outdoor High Bright Monitor
Model	PSL10S
LCD Panel Parameters	
Display Technology	Active Matrix TFT-LCD With LED Backlight
Aspect Ratio	4:3
Active Area (W x H)	210.43mm × 157.82mm
Native Resolution	1024 × 768@60Hz
Response Time (Typ.)	35ms
TNI	105°C
Display Colors	16.7M
Luminance (Typ.)	1300nits, with PCAP 1014 nits
Contrast Ratio (Typ.)	1000:1
LED Backlight Time(Min)	100,000 hours
Viewing Angle (Typ.)	Horizontal (Left/Right) CR≥10 88° /88°
	Vertical (Up/Down) CR≥10 88° /88°
Touch Screen Parameters	
Touch Technology	PCAP
Cover Glass Treatment	Strengthened
Cover Glass Surface Treatment	Anti-Glare
Impact resistance Level	IK08
Ink	UV-resistant
View Area(W x H)	210.4mm × 157.8mm ± 0.3mm
Thickness(Total)	7.5mm ± 0.3mm
Light Transmission	≥78%
Response Time	10ms
Touch Screen Interface	USB
Touch Point	10
Feature	UV&IR Filter
Overall Parameters	
Case/Bezel Color	Black
Mounting Options	VESA: 75mm × 75mm, Panel mount
Outline Dimensions (W×H×D)	275mm × 230mm × 61.1mm
Power Supply	Input Voltage Range: 12~40V DC, 50~60Hz

On Screen Display (OSD)	Control (Back): Power, Auto, Up, Down, Menu
Power Consumption	17W
Light Sensor	Yes
IP Level	Front Panel IP65
Bonding Type	Optical bonding
Operating Altitude	≤3000m
Operating Time	7*24hrs with dynamic video
Temperature Range	Operating: -20°C to 60°C, Storage: -20°C to 70°C
Humidity (Non Condensing)	Operating: 20% to 80%, Storage: 10% to 90%
I/O	VGA, HDMI, USB (Type B, For Touch)
Accessories	Cables: VGA×1, USB×1, 1.5m Length, Clamps × 8
Carton Box Dimensions	375mm (L) × 345mm (W) × 165mm (H)
Weight	Net: 2.46kg, Gross: 3.43kg
MTBF	50,000 hours demonstrated
Agency Approvals	CE, FCC, CCC, UKCA
Warranty	1 year

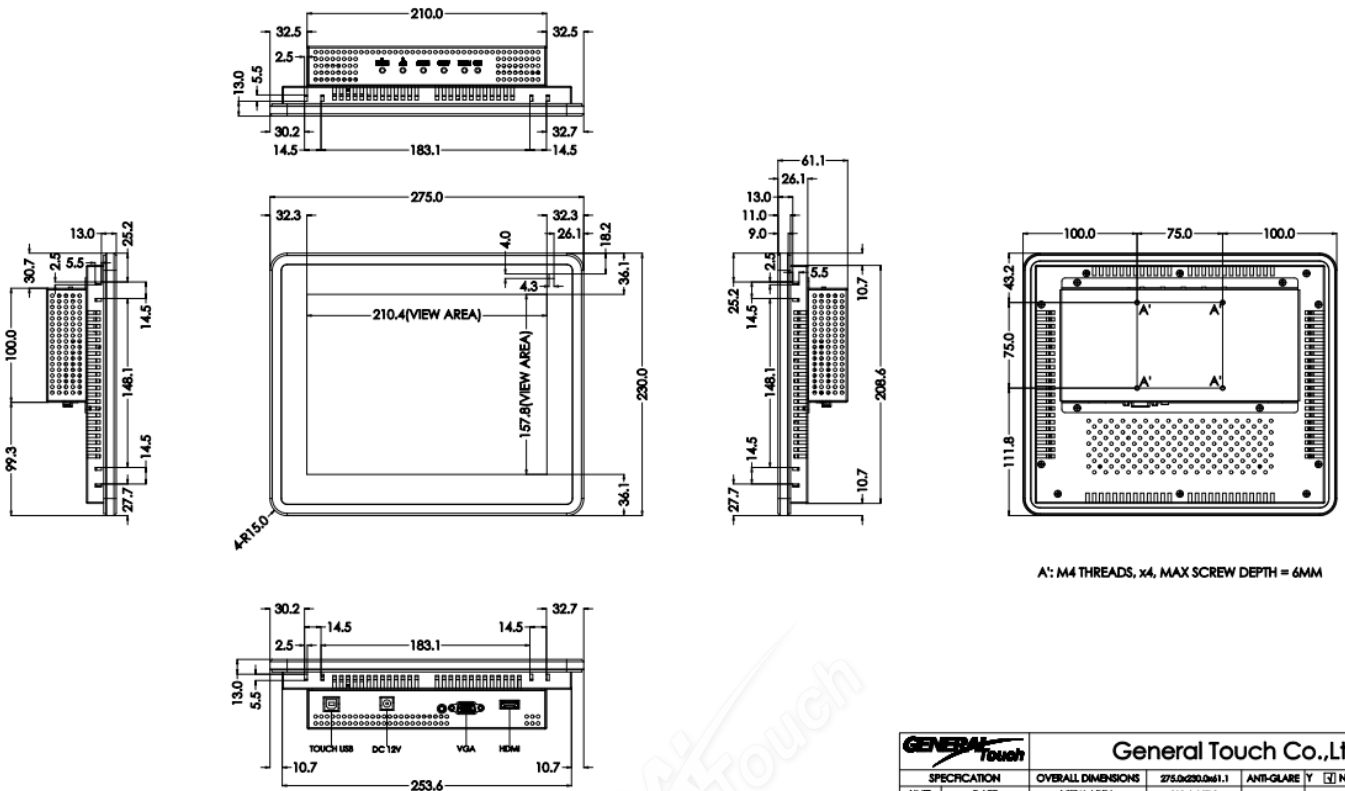
Notes: The light leakage (mura) standard of the edge area surrounding active area is invisible under 1% ND filter.

Ordering Information		
Model	Part Number	Description
PSL10S-RC80A0-UHAAL0-1.0	10202010726R	10", panel mount, 4:3, 1300nits, PCAP, USB, VGA & HDMI, Sunlight readable, Outdoor, Black, IP65 Front
<i>Contact sales for other options</i>		

Optional Accessories			
Model	Part Number	Description	
Power Cable	30301010018R	UK	1500mm
	30301010011R	EU	
	30301010010R	US	
HDMI Cable	30302030001R		1500mm
Adapter	30207010005R	12V/4.17A, DC Cable: 1500mm, DC barrel plug 2.5mm pin inner diameter	

Drawing

TITLE: PSL10S-RC80A0-UHAAL0-1.0		
MARK	AMEND	SIGNATURE
Δ		



A1: M4 THREADS, x4, MAX SCREW DEPTH = 6MM

DO NOT SCALE DRAWING

General Touch		General Touch Co.,Ltd.			
SPECIFICATION	OVERALL DIMENSIONS	275.0x230.0x4.1	ANTI-GLARE	<input checked="" type="checkbox"/> Y <input type="checkbox"/> N <input type="checkbox"/>	DESIGNER:
UNIT	DATE	VIEW AREA			Deng Chunhua
MM	2025/11/28	GLASS THICKNESS	4.0 MM		CHECKED BY:
PROJECTION:		SILK SCREEN COLOR	BLACK		Han Jin
		MOUNTING	VESA <input checked="" type="checkbox"/> BRACKET <input checked="" type="checkbox"/>		APPROVED BY:
SHEET 1 of 2		NOTES			Zhou Bolin
VER: 1.0	SCALE: 1:1	TOUCH TECHNOLOGY	P-CAP <input checked="" type="checkbox"/> SAW <input type="checkbox"/>	NON-TOUCH <input type="checkbox"/> RESISTIVE <input type="checkbox"/>	
TOLERANCE: ±1.0MM					

Go to www.generaltouch.com for more products and information, or contact us.
 General Touch Co., Ltd. reserves the right to change or update, without notice, any information contained herein; to change, without notice, the design, construction, materials, processing or specifications of any products; and to discontinue or limit production or distribution of any products.

Tel: 0086-28-85124120
 Fax: 0086-28-85124115
 E-mail: info@generaltouch.com
<http://www.generaltouch.com>